



## CDM 30

### Functions

Remote manual control for opening bottom-hung casements of maximum width 1200 mm, composed of scissor, corner drive, articulated handle.

### Technical Features

The manual bottom-hung opening CDM30 is formed by:

- control for bottom-hung windows including manual lever, main scissor and chain corner drive;
- transmission rod;
- casing;

The scissor of the CDM30 control allows the maximum opening of 180 mm. The CDM30 control is applicable on all casements with a minimum height of 250 mm and a maximum weight of 80 kg.

The corner drive uses a chain and ensures sturdiness and functionality over time. The scissor of the CDM30 control enables quickly locking and releasing the sash with a lug, and you can also adjust the pressure of the sash with the mechanism installed. The CDM30 control is applicable on flush or stepped profiles from 0 to 25 mm.

### Additional fastening mechanisms

For sashes of width greater than 1200 mm, it is necessary to use one or more additional scissors. Using additional scissors does not increase the load capacity that remains at 80 kg max.

### Materials

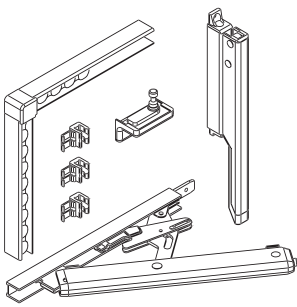
Control for bottom-hung windows and additional scissor made of extruded aluminium, stainless steel and zamak.

Polyamide caps.

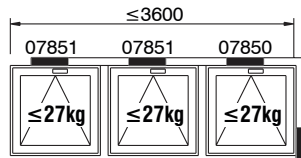
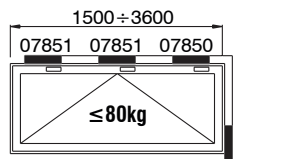
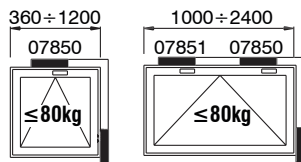
Driving rod made of stainless steel.

Extruded aluminium casing.

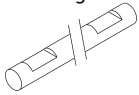
Bottom-hung windows control



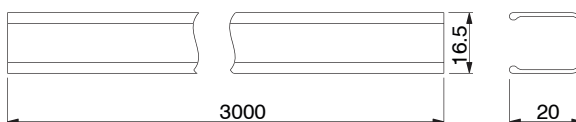
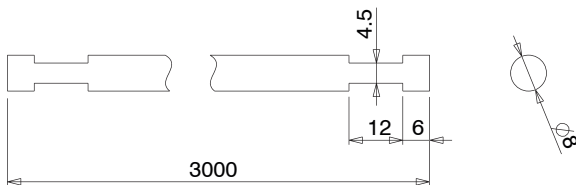
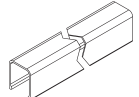
Types and load capacities



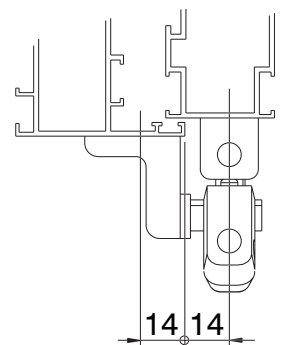
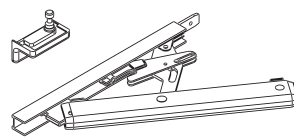
Driving rod



Protective cover



Additional scissor



| Codes | Description                       | Length (mm) | Base Raw | Anodised Elox | Painted | Trend/Gold Brass | Pieces per pack |
|-------|-----------------------------------|-------------|----------|---------------|---------|------------------|-----------------|
| 07850 | BOTTOM-HUNG WINDOWS CONTROL CDM30 | -           |          | X             | X       |                  | 1               |
| 07851 | ADDITIONAL SCISSOR                | > 1200      |          | X             | X       |                  | 1               |
| 07852 | DRIVING ROD                       | 3000        | X        |               |         |                  | 1               |
| 07853 | PROTECTIVE COVER                  | 3000        |          | X             | X       |                  | 1               |