

# Sliding

Solutions for aluminium  
windows and doors

# Index

## Special Sliding

GS3000	5
GS1000	11

## Multilock

Champion Plus	17
Top Security	21
Mismo	25

## Handles

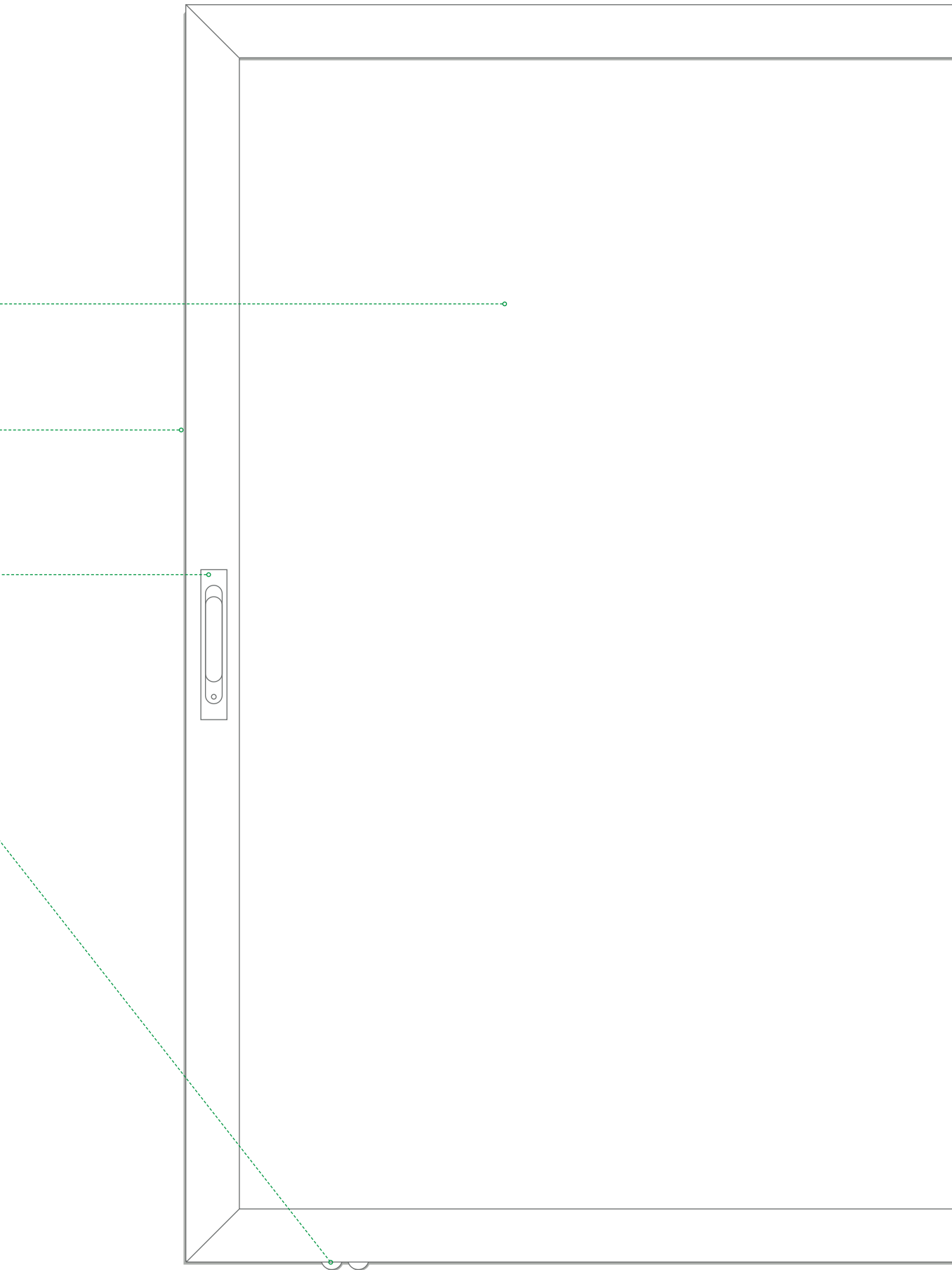
Brio Evo	27
----------	----

## Pulleys

Carrera pulleys	31
Aluminium pulleys	33

## Seals

	35
--	----



Special sliding
Multilock
Handles
Pulleys
Seals

# GS3000

Special sliding

Multilock

Handles

Pulleys

Seals



# GS3000 Lift-and Slide

The lift and slide system is the ideal solution for creating large areas of glazing with large, heavy sashes using a multi-point locking system that keeps the weather out securely and effectively.



### Large sizes

Available for sashes weighing up to 400 kg with maximum heights of 3750 mm.



### Double teeth version

Pawls applied to the frame (standard) or directly on the driving rod (plus).



### Reliability and durability

Tested to 25,000 cycles in accordance with EN13126-16:2008\*.



### Accessibility

Possible lower walkable floor threshold in accordance with the regulations on architectural barriers.



### Fluid, silent movement

Mechanisms and pulleys designed to make sash opening easier.



### Safety

Optional safety spring dampens pull handle rotation ensuring soft return to position.



### Versatile

GS3000 can be applied to the most common series of profiles.



### Micro-ventilation

Minimizes condensation and ensures fresh air supply without compromising the temperature.



### Design

Three different pull handle styles and numerous finishes. Also compatible with Reguitti Inox pull handles.



Go to **technical sheets**

	SASHES UP TO 400 KG	SASHES UP TO 150 KG
Sash height	1150 – 3750 mm	1150 – 3750 mm
Max sash weight	300 kg (400 kg with two additional pulleys)	150 kg
Pulleys 300/22	For 22 mm slot widths and 42 mm distance from the track	×
Pulleys 150/22	×	For 22 mm slot widths and 30 mm distance from the track
Pulleys 150/18	×	For 22 mm slot widths and 42 mm distance from the track
Driving rods	Sashes with 37.5 mm and 27.5 mm backset	Sashes with 37.5 mm and 27.5 mm backset
Sash width	720 – 3350 mm	600 – 2400 mm
Pull Handles	240 mm handle, 80 mm C/C distance 10 mm square Single tooth and Double teeth versions with and without cylinder compatibility	240 mm handle, 80 mm C/C distance 10 mm square Single tooth and Double teeth versions with and without cylinder compatibility

\*Tests performed on the standard version GS3000 with pulleys for sashes up to 300 kg



# PULL HANDLES GS3000

These offer a uniform style in all environments when combined with the window and door handles of the same design (Asia, Kora and Prima).

All pull handles have 10 mm square spindle, 80 mm c/c distance and 240 mm handle.



### Heavy use

They can be used on sashes up to 400 kg



### Primer Base Treatment

Allows the handles to be painted independently in the desired finish



### Antigerm

Antibacterial finish available for applications in public buildings such as hospitals and schools

Base Primer



RAL painted



**TREND**



Highest corrosion resistance: grade 5 according to European standard EN 1670, for use in environments with severe climatic conditions.



### Additional information

Find out about all products



Code	Description
0243701	Prima pull handle, Single tooth
0243801	Prima pull handle, Single tooth, compatible with cylinder
0243901	Prima pull handle, Double teeth, compatible with cylinder
0244601	Asia pull handle, Single tooth
02447	Asia pull handle, Single tooth, compatible with cylinder
02448	Asia pull handle, Double teeth, compatible with cylinder
0246801	Kora pull handle, Single tooth
0246901	Kora pull handle, Single tooth, compatible with cylinder
0247001	Kora pull handle, Double teeth, compatible with cylinder
0799501	External recess handle
03978	Sash stop plug
02979	Sash stop plug

# PULL HANDLES GS3000

In addition to Giese pull handles, GS3000 can also be combined with Reguitti Inox pull handles for lift and slide systems, offering a wider aesthetic choice.



Toledo



### Heavy use

They can be used on sashes up to 400 kg



### 3 finishes

Black RAL 9005, Satin Stainless Steel 316 L and PVD Gun Metal Stainless Steel



### Antigerm

Antibacterial finish available



### Additional information

Find out about all products



Oslo



Phoenix



Stoccolma



Genève

## POWDER COATED FINISHES



**3W** Inox PVD  
Gun Metal



**S5** Stainless  
steel 316L



**KK** Matt Black  
RAL 9005

Highest corrosion resistance performance in accordance with **EN 1670 (Grade 5)**.

Highest mark on cross hatch test according to **ISO 2409 (Grade 0)**.

**GS3000 - driving rod with key, 80 mm c/c distance**

Plus Code	Standard Code	Description	Height	Entrance	Compatible with safety spring
07205	07105	Key driving rod	1700	37.5	no
07206	07106	Key driving rod	1900	37.5	no
07207	0710701	Key driving rod	2000	37.5	yes
07208	0710801	Key driving rod	2300	37.5	yes
07209	0710901	Key driving rod	2600	37.5	yes
07210	0711001	Key driving rod	3000	37.5	yes
07211	07133	Key driving rod	1700	27.5	no
07212	07134	Key driving rod	1900	27.5	no
07213	0713501	Key driving rod	2000	27.5	yes
07214	0713601	Key driving rod	2300	27.5	yes
07215	0713701	Key driving rod	2600	27.5	yes
07216	0713801	Key driving rod	3000	27.5	yes

**GS3000 - optional elements**

Code	Description
07161	Rod cover extension
07122	Security spring

**GS3000 - locking points**

Code Plus	Standard Code	Description
	07149	Fixed locking point 13 – 16 mm
	07150	Standard adjustable closing point 13 – 25 mm
	07151	Locking point with micro-vent.
	07152	Locking point for opposing sash
07221		Frame counterplate
07220		Adjustable nib



**GS3000 - adapter shims (standard and plus versions)**

Code	Description	Kit Composition	Size
07153	Kit of 11 mm shims	10 sash shims + 1 pulley shim	11 mm
07154	Kit of 14 mm shims	10 sash shims + 1 pulley shim	14 mm
07155	Kit of 16 mm shims	10 sash shims + 1 pulley shim	16 mm
07156	Kit of 18 mm shims	10 sash shims + 1 pulley shim	18 mm
07157	Kit of 21 mm shims	10 sash shims + 1 pulley shim	21 mm
07158	Kit of 23 mm shims	10 sash shims + 1 pulley shim	23 mm
07159	Kit of 25 mm shims	10 sash shims + 1 pulley shim	25 mm
07160	Kit of 30 mm shims	10 sash shims + 1 pulley shim	30 mm
07123	Fixed sash spacer (lower cross-beam)		

**GS3000 - pulley kit (standard and plus versions)**

Code	Description	Slot width	Sash/track distance	Maximum load capacity	Usable rod type
07101	300/22 pulley kit	22 mm	42 mm	300 kg	Usable with driving rods with 27.5 mm and 37.5 mm backset
07102	Additional central 300/22 pulley	22 mm	42 mm	300 kg 400 kg	With one pulley: for sashes > 2500 mm long and 300 kg maximum load capacity With two pulleys: for sashes with 400 kg maximum load capacity
07165	150/18 pulley kit	22 mm	42 mm	150 kg	Usable with driving rods with 27.5 mm and 37.5 mm backset
07166	150/22 pulley kit	22 mm	30 mm	150 kg	Usable with driving rods with 27.5 mm and 37.5 mm backset

**GS3000 - pulley connection rods (standard and plus versions)**

Code	Description	Rod width	Sash width
07146	900 mm pulley connection rod	900 mm	600 – 1500 mm
07147	1400 mm pulley connection rod	1400 mm	1501 – 2000 mm
07148	1900 mm pulley connection rod	1900 mm	2001 – 2500 mm

# GS1000

Special sliding

Multilock

Handles

Pulleys

Seals



# GS1000

## Tilt-and Slide

GS1000 combines the practicality of a sliding door with the thermal-acoustic insulation typical of a side-hung window. The tilt position offers ventilation, while the sliding movement allows easy opening of the sash without taking up space in the room.



### Large sizes

Available for sashes weighing up to 200 kg with maximum heights of 2700 mm.



### Wide profiles

Perfectly suitable for very deep thermal break profiles and thick glasses.



### Versatile

GS1000 can be installed on the most common aluminium profiles for casement openings.



### Minimal dimensions

Only 35 mm space required to attach the bottom rail to the frame.



### Automatic latching device

When in closed position, the sash automatically latches into the tilt position.



### Incorrect movement

The device prevents lifting of the sash and the drive of the cremone when the sash is in sliding position.



### Maximum smoothness

The increased diameter of the trolley wheels guarantees maximum ease when operating the sash.



Go to **technical sheets**

*Manual handling with cremone/window handle (Euro groove and R groove)*

	GS1000-ML	GS1000-HL
Sash width	630 - 1480 mm	630 - 1680 mm
Sash height	930 - 2400 mm	930 - 2400 mm
Max sash weight	100 kg	160 kg

*Semi-automatic handling with special long handle window handle*

	GS1000-HD 100	GS1000-HD 160	GS1000-HD 200
Sash width	730 - 1300 mm	730 - 2000 mm	1080 - 2000 mm
Sash height	930 - 2400 mm	930 - 2700 mm	930 - 2700 mm
Max sash weight	100 kg	160 kg	200 kg

## GS1000 - manual control handles



	PRIMA	ASIA	KORA	ARIA
SUPRA7 window handle without base	04155	04153	04154	04156
Window handle	02762	02415	00997 Standard 02466 175 mm handle	×
Cremona	01039 Micro-ventilation 0119102 With key	0304911 Standard 0099611 Micro-ventilation SKG certified 0304911 Micro-ventilation	00959 Micro-ventilation	×

43 mm c/c distance Reguitti handles also available

**GS1000 - forced control handles**



	CREMONE	CREMONE WITH KEY
Right hand	09736N	09738N
Left hand	09737N	09739N

Base Primer



RAL painted



**TREND**



Highest corrosion resistance: grade 5 according to European standard EN 1670, for use in environments with severe climatic conditions.

## GS1000

Code	Description	ML	HL	HD 100	HD 160	HD 200
09776	Single tooth Pulleys Kit RH	✓	✓	✓	✓	✗
09777	Single tooth Pulleys Kit LH	✓	✓	✓	✓	✗
09778	Twin Pulleys Kit RH	✗	✗	✗	✗	✓
09779	Twin Pulleys Kit LH	✗	✗	✗	✗	✓
09780	Hardware Kit	✓	✓	✗	✗	✗
09783	Window Handle Hardware Kit EG	✓	✓	✗	✗	✗
09758	Hardware Kit R40	✓	✓	✗	✗	✗
09781	Hardware Kit LH	✗	✗	✓	✓	✓
09782	Hardware Kit RH	✗	✗	✓	✓	✓
09723	Stay Arm Wing Width=630-930	✓	✓	✓	✗	✗
09724	Stay Arm Wing Width=931-1280	✓	✓	✓	✗	✗
09725	Stay Arm Wing Width=1281-1680	✓	✓	✓	✗	✗
09761	Profiles Kit Range=630-880	✓	✓	✓	✓	✗
09762	Profiles Kit Range=881-1080	✓	✓	✓	✓	✗
09763	Profiles Kit Range=1081-1280	✓	✓	✓	✓	✓
09764	Profiles Kit Range=1281-1480	✓	✓	✓	✓	✓
09765	Profiles Kit Range=1481-1680	✗	✓	✗	✓	✓
09766	Profiles Kit Range= 1681-2000	✗	✗	✗	✓	✓
09768	Top Rail L=6000 mm	✓	✓	✓	✓	✓
09769	Bottom Rail L=6000 mm	✓	✓	✓	✓	✓
09770	Top Cover L=6000 mm	✓	✓	✓	✓	✓
09771	Bottom Cover L=6000 mm	✓	✓	✓	✓	✓
09772	Screw Cover Profile - L=6000 mm	✓	✓	✓	✓	✓
09773	Carriages Connect Rod L=4000 mm	✓	✓	✓	✓	✓



Code	Description	ML	HL	HD 100	HD 160	HD 200
09774	Accessories Kit	✓	✗	✓	✗	✗
09775	Accessories Kit with Side Supports	✗	✓	✗	✓	✓
0979001	Movable Guide Block	✓	✓	✓	✓	✓
09789	Connecting Rod Guide	✗	✓	✓	✓	✓
09759	Additional Arm	✗	✗	✗	✓	✓
09751	Window Handle Mechanism - EG LH	✓	✓	✗	✗	✗
09752	Window Handle Mechanism - EG RH	✓	✓	✗	✗	✗
09785	Strikers Kit EG 10-14	✗	✗	✓	✓	✓
09786	Strikers Kit EG 12-15	✗	✗	✓	✓	✓
09787	Strikers Kit EG 13.5-16.8	✗	✗	✓	✓	✓
09788	Strikers Kit EG 14-18	✗	✗	✓	✓	✓
09736N	Cremone Right	✗	✗	✓	✓	✓
09737N	Cremone Left	✗	✗	✓	✓	✓
09738N	Cremone Right With Key	✗	✗	✓	✓	✓
09739N	Cremone Left With Key	✗	✗	✓	✓	✓
09791	Incorrect Movement Safety Device Set - LH 14/18	✗	✗	✓	✓	✓
09792	Incorrect Movement Safety Device Set - RH 14/18	✗	✗	✓	✓	✓
09793	Incorrect Movement Safety Device Set - EG LH 10/14	✗	✗	✓	✓	✓
09794	Incorrect Movement Safety Device Set - EG RH 10/14	✗	✗	✓	✓	✓
09741N	Template For Cremone Drilling	✗	✗	✓	✓	✓
09801	Drilling Jig For Carriages	✓	✓	✓	✓	✓
09803	Drilling Jig For Corner And Arms	✗	✗	✓	✓	✓
09804	Jig Centring Device	✓	✓	✓	✓	✓
09805	Screw Jig For Rails	✓	✓	✓	✓	✓

# CHAMPION PLUS

Special sliding

Multilock

Handles

Pulleys

Seals



# CHAMPION PLUS

Multilocking system

The Champion Plus hardware system is the ideal solution for multipoint locking for sliding doors. The Champion Plus multi-locking range is available with 1 to 3 locking points, which can be installed on both doors and windows.



### 200 kg tensile strength

Champion Plus has been tested achieving resistance to strain values up to 200 kg for each locking point.



### Easy installation

The rod is easily and quickly fitted to the profile using a special fixing kit.



### Corrosion resistant

The surface treatments used ensure high corrosion resistance (Class 4 - EN 1670-2008).



### Wide range

Rods are available in different lengths, they can easily adapt to the different sizes of windows or doors.



### Micro-ventilation

Minimizes condensation and ensures fresh air supply without compromising the temperature.



### Incorrect movement

Prevents the system from reverting to the lock position, thus protecting the components from accidental knocks.



Go to technical sheet



Go to technical sheet



Go to technical sheet

#### CHAMPION PLUS MICROVENT 45° cut profiles

- Rod length 600-1600 mm (2-3 locking points)
- 7.5 or 15 mm backset
- Micro-ventilation device

#### CHAMPION PLUS 45° cut profiles

- Rod length 270-1800 mm (1-3 locking points)
- 7.5 or 15 mm backset
- Optional incorrect movement safety device

#### CHAMPION PLUS 90 90° cut profiles

- Rod length 600-1600 mm (2-3 locking points)
- 15 mm backset
- Hook nibs

## Champion Plus - rods

Code	Cut	Backset	Cylinder setup	Micro ventilation	Height	Locking points	Incorrect movement safety device
------	-----	---------	----------------	-------------------	--------	----------------	----------------------------------

## Champion Plus

0272000001	45°	7.5	×	×	270 mm	1	×
0272100001	45°	7.5	×	×	600 mm	2	02770
0272200001	45°	7.5	×	×	1000 mm	2	02770
0630900001	45°	7.5	×	×	1600 mm	3	02770
0272300001	45°	7.5	×	×	1800 mm	3	02770
0272400001	45°	15	×	×	270 mm	1	×
0272500001	45°	15	×	×	600 mm	2	02770
0272600001	45°	15	×	×	1000 mm	2	02770
0631000001	45°	15	×	×	1600 mm	3	02770
0272700001	45°	15	×	×	1800 mm	3	02770
0272800001	45°	15	✓	×	1800 mm	3	02770

## Champion Plus Microvent

06334000	45°	7.5	×	✓	600 mm	2	×
06335000	45°	7.5	×	✓	1000 mm	2	×
06336000	45°	7.5	×	✓	1600 mm	3	×
06337000	45°	15	×	✓	600 mm	2	×
06338000	45°	15	×	✓	1000 mm	2	×
06339000	45°	15	×	✓	1600 mm	3	×
06340000	45°	15	✓	✓	1600 mm	3	×

## Champion Plus 90

06327000	90°	15	×	×	600 mm	2	×
06328000	90°	15	×	×	1000 mm	2	×
06329000	90°	15	×	×	1600 mm	3	×
06330000	90°	15	✓	×	1600 mm	3	×



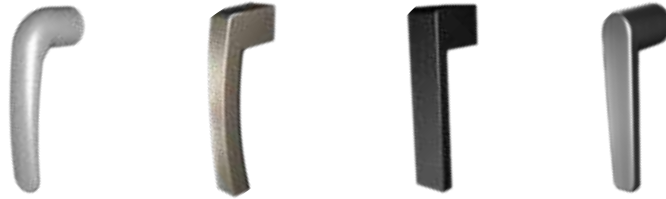
## Fixing kits

The fixing kits contain all the elements required to secure the Champion Plus rod to the sash profile and attach the strikers to the frame profile.

**Depending on the rod a specific code must be matched to the sliding system employed.**

To find the most suitable fixing kit, consult the application table via the QR-Code shown here, visit the Giesse website or contact the Technical Service Department.

## Champion Plus - handles



	PRIMA	ASIA	KORA	ARIA
SUPRA7 window handle without base	04155 Standard 04397 Double	04153 Standard 04395 Double	04154 Standard 04396 Double	04156 Standard 04398 Double
Window handle	02762 Standard 02763 Double	02415 Standard 02415 Double	00997 Standard 00998 Double	×
Offset window handle	×	×	0099611 / 0099621 Standard 0304911 / 0304921 Piastrine lunghe	×



43 mm c/c distance Reguitti handles also available



Recessed handle	External recessed handle	Blank recessed handle for opposite sash
02760 Standard 02761 Oversize profiles	02764 Standard	02765 Standard

Finishes available: base primer, RAL colours and the exclusive high-end "TREND" finishes. Highest corrosion resistance: grade 5 according to European standard EN 1670, for use in environments with severe climatic conditions.

# TOP SECURITY

Special sliding

Multilock

Handles

Pulleys

Seals





# TOP SECURITY

## Multilocking system

Top Security is the multi-locking system particularly suitable for 90°-cut sash sliding systems where the sash-frame distance is particularly small. It guarantees higher safety of the sliding window/door thanks to a higher number of locking points.



### 200 kg resistance

Each locking point has a pull-out strength of up to 200 kg.



### Easy installation

The rod can be fitted quickly and easily by simply screwing it to the sash profile.



### Corrosion resistant

Austenitic stainless steel guarantees high corrosion resistance, even in harsh environments.



### Versatile

2-point (windows) and 3-point (doors) multi-point locking versions available.



### Height adjustment

The height adjustment (3 positions) can be carried out during the installation phase.



### Wide range of handles

It can be operated either by a Brio Evo recessed handle or by a Cremona bolt (Unica or Asia aesthetic).



Go to technical sheets

### WINDOWS

### DOORS

Rod

2-point locking system  
Rod length = 720 mm

3-point locking system  
Rod length = 1500 mm

## Top Security

Code	Description	Notes
03733001	2-locking point rod for windows H = 800-1600 mm	rod length = 720 mm Counterplate positioning template included
03734001	3-locking point rod for doors H = >1600 mm	rod length = 1500 mm Counterplate positioning template included
02612	Universal template for multi-locking	

## Counterplates

Depending on the profile, a specific code must be matched to the sliding system.

To find the most suitable counterplates, visit the Giesse website or contact the Technical Service Department.

## Universal template for quick fitting

Giesse has developed a special universal template (sold separately) that speeds up the drilling operation on the sash, which is necessary to apply the multi-locking system.



## Top Security - handles

			
	<b>UNICA</b>	<b>ASIA</b>	
<b>Cremone</b>	<b>01164 N</b> Slider L = 35 mm <b>01165 N</b> Slider L = 20 mm	<b>01401</b> Standard <b>02025</b> Kit Asia Plus, slider L = 20 mm <b>02026</b> Kit Asia Plus, slider L = 28 mm <b>02027</b> Kit Asia Plus, slider L = 35 mm	
<b>Rod drive</b>	<b>04109</b>	<b>04109</b>	
			
	<b>Recessed handle</b>	<b>External recessed handle with key</b>	<b>External pull handle with key</b>
<b>BRIO EVO Round design</b>	<b>02992 02</b> Standard <b>00873 02 XL</b>	<b>06054</b>	<b>02967 V</b>
			
	<b>Recessed handle</b>	<b>External recessed handle with key</b>	<b>External pull handle with key</b>
<b>BRIO EVO Square design</b>	<b>06037</b> Standard <b>06039 XL</b>	<b>06004</b>	<b>06009</b>

Finishes available: base primer, RAL colours and the exclusive high-end "TREND" finishes.  
Highest corrosion resistance: grade 5 according to European standard EN 1670, for use in environments with severe climatic conditions.

# MISMO



Special sliding

Multilock

Handles

Pulleys

Seals

# MISMO

## Multilocking fasteners

Mismo is a modular system of fittings, operated by a cremone, which allows customers to decide the number of locking points for a sliding French window.



### Security

The window maker can decide the number of locking points according to the security needs.



### Cremone

The cremone allows the hardware to be operated firmly and in comfort.



### Versatile

For all systems with 15/20 sash channel or extruded aluminium overlap profile.



Go to **technical sheets**

Code	Description	Notes
0334001	Nib holder	
03345	Straight nib	for 15/20 mm rod with 8 mm hole
-	Counterplate	to be chosen according to the frame

### Mismo - handles



UNICA



ASIA

#### Cremone

**01164 N** Slider L = 35 mm  
**01165 N** Slider L = 20 mm  
**01166 N** Slider L = 45 mm  
**01173 N** Slider L = 55 mm

**01401** Standard  
**02025** Kit Asia Plus, slider L = 20 mm  
**02026** Kit Asia Plus, slider L = 28 mm  
**02027** Kit Asia Plus, slider L = 35 mm  
**02028** Kit Asia Plus, slider L = 45 mm  
**02029** Kit Asia Plus, slider L = 55 mm  
**02050** Kit Asia Plus, slider L = 65 mm

# HANDLES



Specializing

Multilock

Handles

Pulleys

Seals



# BRIO EVO Recessed handles

Brio Evo is a full range of recessed handles and pull handles for sliding windows and doors.



### Two designs

Rounded and square design, for a complete range.



### Easy to install

Easier and faster application on profiles up to 3mm.



### Strong

The grub screw in Brio Mini Evo is centrally located for sturdier fixing.



### Ergonomic

Enhanced ergonomics for comfortable manoeuvring



### Variety

Three different backsets available (standard, L and XL)



**Cradle to Cradle Certified®**  
The global standard for environmentally responsible products.



Go to **technical sheets**

BRIO EVO recessed handles are available with both Single tooth and Double teeth tooth.



BRIO EVO pull handles are available also with cylinder key.



## BRIO EVO - round design



Brio Evo



Brio Mini Evo

External  
recessed  
handleExternal  
recessed  
pull handleExternal  
pull handle

Code	Description	Key	Backset	Spring
0298802	Brio Mini Evo	×	12.5	Double teeth Teeth
0297802	Brio Mini Evo MD	×	12.5	Single tooth
0299202	Brio Evo	×	12.5	Double teeth teeth
0289201	Brio Evo key	✓	12.5	Double teeth teeth
0298201	Brio Evo MD	×	12.5	Single tooth tooth
0288201	Brio Evo MD key	✓	12.5	Single tooth tooth
0083101	Brio Evo Rapid	×	12.5	Front fixing
0289401	Brio Evo L	×	18.8	Double teeth teeth
0087302	Brio Evo XL	×	24.3	Double teeth teeth
03043	Brio Pull Handle big	×	-	-
03064	Brio Pull Handle small	×	-	-
06011	External recessed pull handle	×	-	Double teeth teeth/Single tooth
06054	Brio Evo + External recessed handle key	✓	12.5	Double teeth
06019	Brio Evo MD + External recessed handle key	✓	12.5	Single tooth
02966N	Brio External pull handle	×	-	Double teeth/ Single tooth
02967V	Brio External pull handle key	✓	-	Double teeth/ Single tooth
02996	Brio External pull handle for european cylinder key	✓	-	Double teeth/ Single tooth

## BRIO EVO - square design



Brio Evo



Brio Mini Evo



External recessed handle

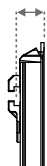


External recessed pull handle



External pull handle

Code	Description	Key	Backset	Spring
0603801	Brio Mini Evo	×	12.5	Double teeth
0601801	Brio Mini Evo MD	×	12.5	Single tooth
06004	Brio Evo	×	12.5	Double teeth
06005	Brio Evo key	✓	12.5	Double teeth
06006	Brio Evo MD	×	12.5	Single tooth
06007	Brio Evo MD key	✓	12.5	Single tooth
06008	Brio Evo L	×	18.8	Double teeth
06009	Brio Evo XL	×	24.3	Double teeth
03050	Brio Pull Handle big	×	-	-
06010	External recessed pull handle	×	-	Double teeth/ Single tooth
06039	Brio Evo + External recessed pull handle key	✓	12.5	Double teeth
06014	External pull handle	×	-	Double teeth/ Single tooth
06037	Brio Evo + External pull handle key	✓	12.5	Double teeth
06052	Brio Evo MD + External handle key	✓	12.5	Single tooth



12.5  
backset

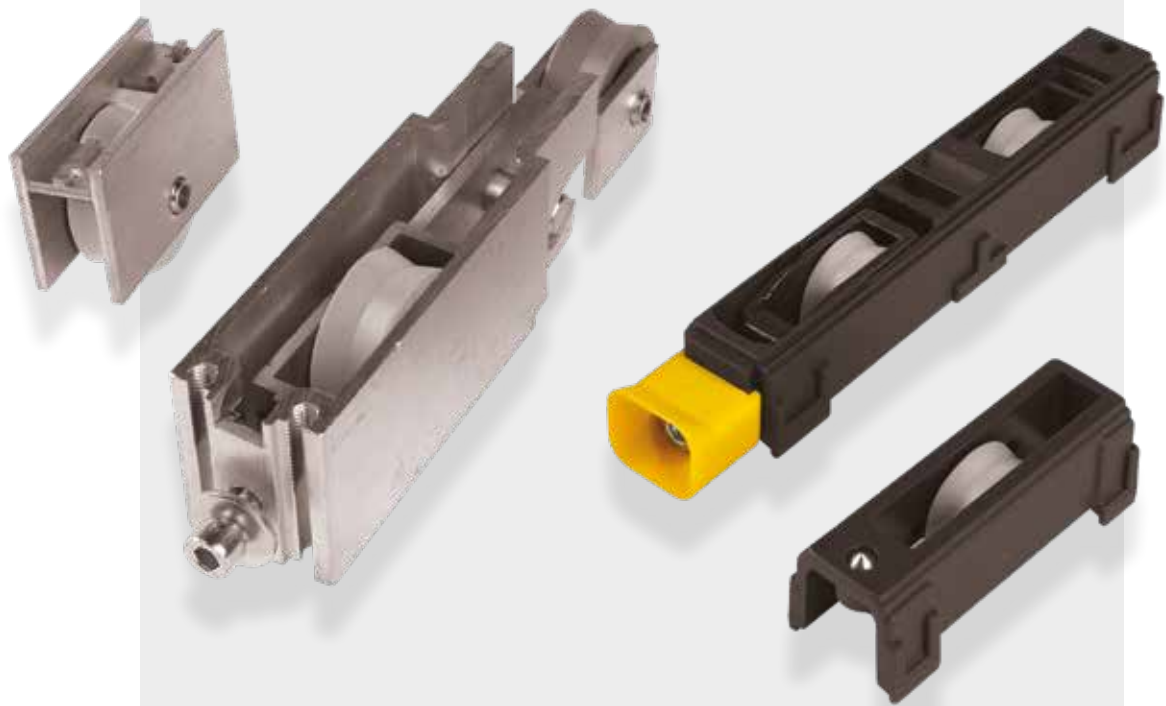


18.8 (L)  
backset



24.3 (XL)  
backset

# Pulleys



Special sliding

Multilock

Handles

**Pulleys**

Seals

**CARRERA**

Stationary one-wheel pulley.

- Load capacity of up to 45 kg per wheel, or a sash weight of up to 180 kg
- Corrosion-proof materials for excellent strength and durability, maintaining optimum performance levels



Go to  
**technical sheet**

**CARRERA**

Stationary two-wheel pulley.

- Load capacity of up to 45 kg per wheel, or a sash weight of up to 180 kg
- Corrosion-proof materials for excellent strength and durability, maintaining optimum performance levels



Go to  
**technical sheet**

**CARRERA**

Adjustable one-wheel pulley.

- Load capacity of up to 45 kg per wheel, or a sash weight of up to 180 kg
- Corrosion-proof materials for excellent strength and durability, maintaining optimum performance levels



Go to  
**technical sheet**

**CARRERA**

Adjustable two-wheel pulley.

- Load capacity of up to 45 kg per wheel, or a sash weight of up to 180 kg
- Corrosion-proof materials for excellent strength and durability, maintaining optimum performance levels



Go to  
**technical sheet**

### Stationary one-wheel aluminium pulley.

- Load capacity of up to 50 kg with two pulleys
- It can be inspected without disassembling the sash



Go to  
**technical sheet**

### Stationary two-wheel aluminium pulley.

- Load capacity of up to 200 kg with two pulleys
- It can be inspected without disassembling the sash



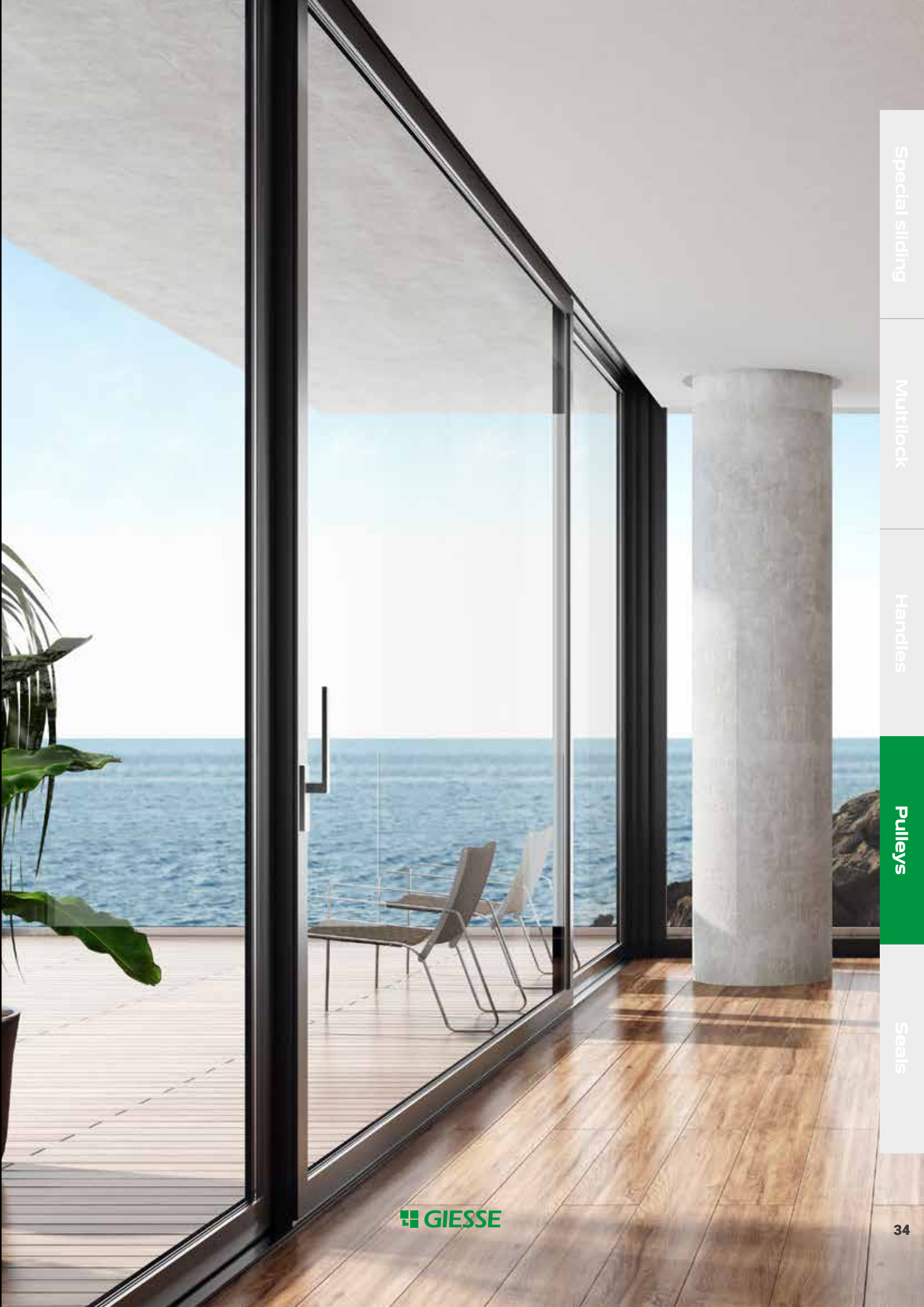
Go to  
**technical sheet**

### Adjustable two-wheel aluminium pulley.

- Load capacity of up to 240 kg with two pulleys
- Micro-adjustable, allows vertical movement of the sash through a range of 4 mm
- It can be inspected without disassembling the sash



Go to  
**technical sheet**



Special siding

Multilock

Handles

**Pulleys**

Seals



# Seals



Spezialabdichtung

Multilock

Handles

Pulleys

Seals



### Q-LON polyurethane foam weatherseals

The exclusive Q-LON seal is made from a special polyurethane foam contained in a weather resistant polyethylene film.

- Excellent recovery after compression, even at low temperatures
- The lowest thermal conductivity on the market (0.04 W/m·K at 0 °C)
- Low compression force required
- The outer film is not altered by paints, detergents and colourants
- High resistance to weather and UV rays
- Exceptional sound insulation performance
- Wide range of colours
- Fire retardant version available



**Discover more**

### Brush pile seals

Seals made from virgin polypropylene (PP) yarn.

- Available in various widths and heights
- Different densities depending on the seal type, width and assembly distance
- Thermosetting for recovery after compression
- Central and side fins for maximum airtightness
- Excellent resistance to abrasion and static build-up
- UV stable and chemically inert for extended longevity
- Silicone-treated polypropylene yarn to resist water, soil and mould



**Discover more**

### Extruded seals

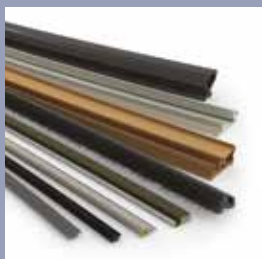
Seals made in a range of extruded materials can be combined with foam seals.

- Very wide range of colours available
- Three different densities and materials for optimal performance
- Configurable geometries from the simplest to the most specific shapes



**Discover more**





**Schlegel**

High performance sealing solutions



**GIESSE**

Innovative engineered hardware



**REGUITTI**

Italian design handles



**DATEC**

Timeless exclusive handles

