

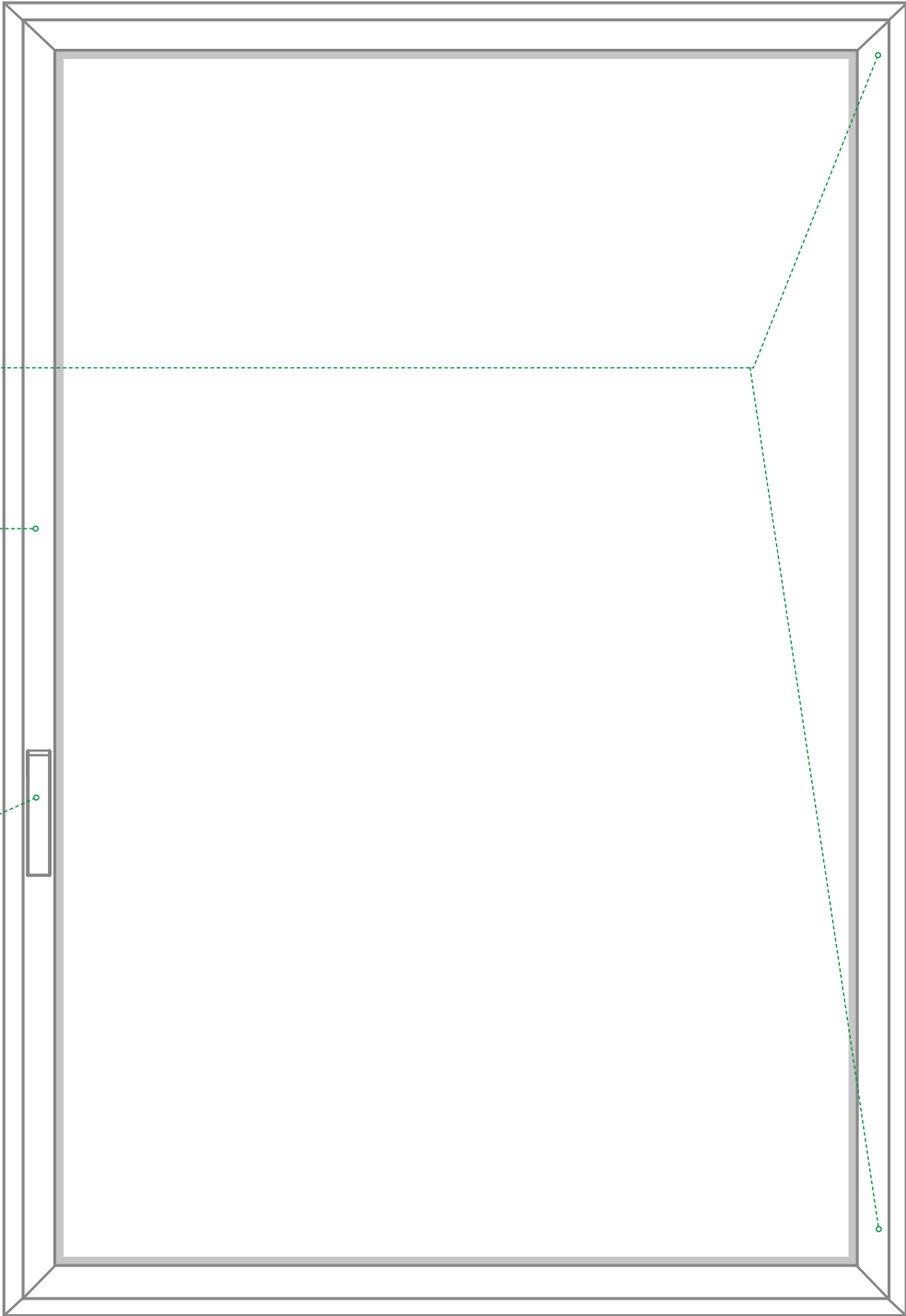


Tilt-and-turn

Solutions for
aluminium windows

Index

| | |
|---------------------------------|----|
| Tilt-and-turn window | 3 |
| Advantages | |
| Logica Version | |
| SKG components | |
| Hinges | 7 |
| C.H.I.C. concealed hinges | |
| FUTURA | |
| Additional hardware | 21 |
| Fastening mechanisms | |
| Additional arms | |
| Additional fastening mechanisms | |
| Corner drives | |
| Additional hardware | |
| SKG components | |
| Templates | |
| Handles | 24 |
| Seals | 25 |



Tilt-and-turn window



Modular

The reduction in the number of parts per pack and the modularity mean that there is no need to load the warehouse unnecessarily. The intuitive system **also reduces assembly times by 75%.**

Logica version

page 5

The *Logica* safety mechanism reverses the classic tilt-and-turn window opening mechanism. It is recommended for use in public buildings such as schools and hospitals, with a *Key Capture* cremone.



Burglar-proof

page 6

SKG certified components are available to achieve a RC2 or RC3 rating on a window.





Micro-ventilation

With the handle at 135°, the sash is in the micro-ventilation position. A constant flow minimizes condensation and ensures a fresh air supply without compromising the room temperature.

3D adjustment

Height, side and compression adjustment is possible, **even on site or after the window has been installed.**



Spazio Giesse

The integrated, scalable and technological solution that optimizes aluminium window production and rod cutting, minimizing costs, time and error margins.

Mechanisms

A wide choice of cremones, handles and **Supra7 handles without rosette**, to blend in harmoniously with the window and surrounding environment.

LOGICA

The "Logica" version reverses the classic tilt-and-turn mechanism: with the cremone at 90°, the door opens tilted, while with the cremone at 180°, it is side-hung.

It is particularly recommended for use in public buildings such as schools and hospitals, combined with a *Key Capture* cremone. This combination enables the window to be fully opened only by the person in possession of the key, while ordinary users can only open it as a bottom-hung window, to change the air in total safety.

1

Handle at 0°

Closed window.



2

Handle at 90°

Bottom-hung opening



3

**Handle at 180°
only with key**

Side-hung opening



KEY CAPTURE

Safety mechanism that prevents the key from being extracted when the mechanism is tilted 180°.

Key Capture cremones in three different designs.

Prima

Asia

Kora

SKG HARDWARE

SKG and SKG*** certified Giesse products can be used to achieve RC2 or RC3 rating on a tilt-and-turn window.**

The SKG kits include all the components and mechanisms required to set up a window of any size. They can be paired with the Futura hinges or the C.H.I.C concealed hinges, in addition to the Giesse cremones with three different designs: Prima, Asia and Kora [page 24].



SKG is the only burglar-proof product-specific (HW) certification issued by SKG-IKOB (Netherlands), Europe's most authoritative laboratory in the field.

CHIC

Tilt--turn window

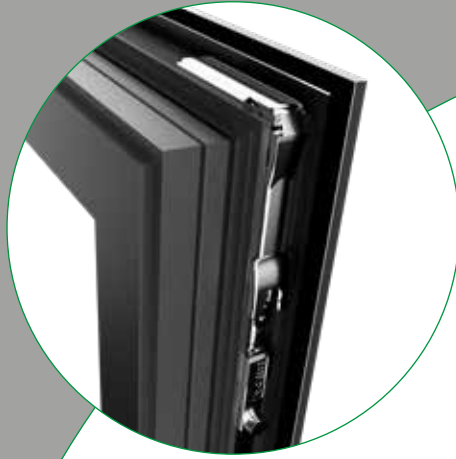
C.H.I.C.

FUTURA

Additional hardware

Seals

Corner drive



Window handle or cremone



Double lift-proof striker





Top hinge and arm set



Fastening
striker



Bottom hinge set

CHIC 100**Euro Groove**

C.H.I.C. 100 is Giesse's range of concealed hinges for Euro Groove tilt-and-turn windows, which improves the aesthetics and increases the value of hardware while simplifying warehouse organization.



EPD[®]
THE INTERNATIONAL EPD[®] SYSTEM



Load capacity
100 kg

**Adjustments**

Bottom side = ± 1.5 mm
Bottom height = $+2.5/-1$ mm
Bottom compression = $+1.4/-0.6$ mm
Top side = $+3.5/-1.5$ mm
Top compression = ± 1.5 mm

**Installation**

The window can be installed on site in just a few steps.

**Opening**

Max 180°

**Corrosion resistance**

Grade 4 according to standard EN 1670 (>240h salt spray).

**EPD**

Life Cycle Assessment according to standards ISO 14040, ISO 14044, EN ISO 14025 and EN 15804



Go to the **technical datasheet**

| Code | Description | Micro-ventilation | Range (mm) |
|--------|------------------------------------|-------------------|-------------------|
| 043551 | Kit of T/T Hinges + T1 RH arm | Yes | L = 470 – 700 mm |
| 043552 | Kit of T/T Hinges + T1 LH arm | Yes | L = 470 – 700 mm |
| 043591 | Kit of T/T Hinges + T1 RH arm | No | L = 445 – 470 mm |
| 043592 | Kit of T/T Hinges + T1 LH arm | No | L = 445 – 470 mm |
| 043561 | Kit of T/T Hinges + T2 RH arm | Yes | L = 600 – 1500 mm |
| 043562 | Kit of T/T Hinges + T2 LH arm | Yes | L = 600 – 1500 mm |
| 04357 | Additional arm fastening mechanism | - | - |

Complete the window with all the hardware on pages 21–24

C.H.I.C. 100 Flush is Giesse's range of concealed hinges for Euro Groove tilt-and-turn windows with flush systems, which improves the aesthetics and increases the value of hardware while simplifying warehouse organization.



Load capacity
100 kg



Adjustments
Bottom side = ± 1.5 mm
Bottom height = $+2.5/-1$ mm
Bottom compression = $+1.4/-0.6$ mm
Top side = $+3.5/-1.5$ mm
Top compression = ± 1.5 mm



Installation
The installation of the door can take place on site in just a few steps.



Opening
Max 105°



Corrosion resistance
Grade 5, the **maximum level** according to standard EN 1670 (>480h salt spray).



Go to the **technical datasheet**

| Code | Description | Micro-ventilation | Range (mm) |
|--------|-------------------------------|-------------------|-------------------|
| 052911 | Kit of T/T Hinges + T1 RH arm | Yes | L = 485 – 700 mm |
| 052912 | Kit of T/T Hinges + T1 LH arm | Yes | L = 470 – 700 mm |
| 052921 | Kit of T/T Hinges + T2 RH arm | Yes | L = 600 – 1500 mm |
| 052922 | Kit of T/T Hinges + T2 LH arm | Yes | L = 600 – 1500 mm |
| 05293 | Limitation arm (mandatory) | - | - |

Complete the window with all the hardware on pages 21–24

CHIC 130**Euro Groove**

C.H.I.C. 130 is Giesse's range of concealed hinges for Euro Groove tilt-and-turn windows, which improves the aesthetics and increases the value of hardware while simplifying warehouse organization.



EPD[®]
THE INTERNATIONAL EPD[®] SYSTEM



Load capacity
130 kg

**Adjustments**

Bottom side = ± 1.5 mm
Bottom height = $+2.5/-1$ mm
Bottom compression = $+1.4/-0.6$ mm
Top side = $+3.5/-1.5$ mm
Top compression = ± 1.5 mm

**Installation**

The window can be installed on site in just a few steps.

**Opening**

Max 180°

**Corrosion resistance**

Grade 4 according to standard EN 1670 (>240h salt spray).

**EPD**

Life Cycle Assessment according to standards ISO 14040, ISO 14044, EN ISO 14025 and EN 15804



Go to the **technical datasheet**

| Code | Description | Micro-ventilation | Range (mm) |
|--------|------------------------------------|-------------------|-------------------|
| 044251 | Kit of T/T Hinges + T1 RH arm | Yes | L = 470 – 700 mm |
| 044252 | Kit of T/T Hinges + T1 LH arm | Yes | L = 470 – 700 mm |
| 044261 | Kit of T/T Hinges + T2 RH arm | Yes | L = 600 – 1500 mm |
| 044262 | Kit of T/T Hinges + T2 LH arm | Yes | L = 600 – 1500 mm |
| 04357 | Additional arm fastening mechanism | - | - |

Complete the window with all the hardware on pages 21–24

C.H.I.C. 130 ERRE is Giesse's range of concealed hinges for R Groove tilt-and-turn windows, which improves the aesthetics and increases the value of hardware while simplifying warehouse organization.



Load capacity
130 kg



Adjustments
Bottom side = ± 1.5 mm
Bottom height = $+2.5/-1$ mm
Bottom compression = $+1.4/-0.6$ mm
Top side = $+3.5/-1.5$ mm
Top compression = ± 1.5 mm



Installation
The installation of the door can take place on site in just a few steps.



Opening
Max 180°



Corrosion resistance
Grade 5, the **maximum level** according to standard EN 1670 (>480h salt spray).



Go to the **technical datasheet**

| Code | Description | Micro-ventilation | Range (mm) |
|--------|------------------------------------|-------------------|-------------------|
| 052841 | Kit of T/T Hinges + T1 RH arm | No | L = 450 – 475 mm |
| 052842 | Kit of T/T Hinges + T1 LH arm | No | L = 450 – 475 mm |
| 052851 | Kit of T/T Hinges + T2 RH arm | Yes | L = 475 – 700 mm |
| 052852 | Kit of T/T Hinges + T2 LH arm | Yes | L = 475 – 700 mm |
| 052861 | Kit of T/T Hinges + T2 RH arm | Yes | L = 600 – 1600 mm |
| 052862 | Kit of T/T Hinges + T2 LH arm | Yes | L = 600 – 1600 mm |
| 05287 | Additional arm fastening mechanism | - | - |

Complete the window with all the hardware on pages 21–24

CHIC 150**Euro Groove**

C.H.I.C. 150 is Giesse's range of concealed hinges for Euro Groove tilt-and-turn windows, which improves the aesthetics and increases the value of hardware while simplifying warehouse organization.



EPD[®]
THE INTERNATIONAL EPD[®] SYSTEM



Load capacity
150 kg

**Adjustments**

Bottom side = ± 1.5 mm
Bottom height = $+2.5/-1$ mm
Bottom compression = $+1.4/-0.6$ mm
Top side = $+3.5/-1.5$ mm
Top compression = ± 1.5 mm

**Installation**

The window can be installed on site in just a few steps.

**Opening**

Max 180°

**Corrosion resistance**

Grade 4 according to standard EN 1670 (>240h salt spray).

**EPD**

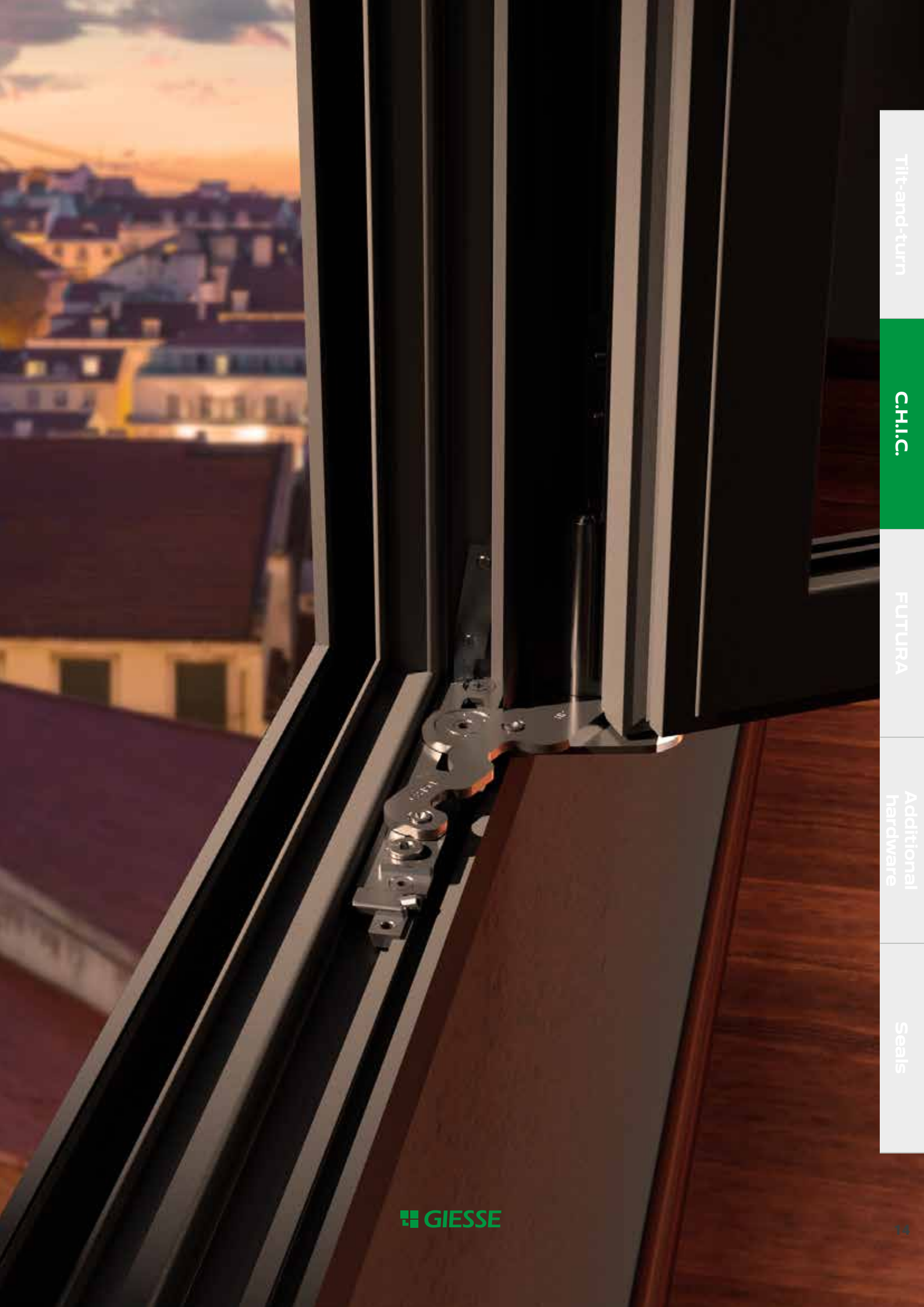
Life Cycle Assessment according to standards ISO 14040, ISO 14044, EN ISO 14025 and EN 15804



Go to the **technical datasheet**

| Code | Description | Micro-ventilation | Range (mm) |
|---------|------------------------------------|-------------------|-------------------|
| 0436511 | Kit of T/T Hinges + T1 RH arm | Yes | L = 470 – 700 mm |
| 0436521 | Kit of T/T Hinges + T1 LH arm | Yes | L = 470 – 700 mm |
| 0436611 | Kit of T/T Hinges + T2 RH arm | Yes | L = 600 – 1500 mm |
| 0436621 | Kit of T/T Hinges + T2 LH arm | Yes | L = 600 – 1500 mm |
| 04357 | Additional arm fastening mechanism | - | - |

Complete the window with all the hardware on pages 21–24



Tilt-and-turn

C.H.I.C.

FUTURA

Additional hardware

Seals

FUTURA

Tilt-and-turn

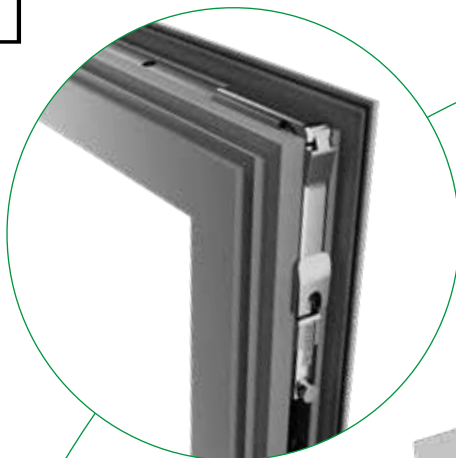
C.H.I.C.

FUTURA

Additional hardware

Seals

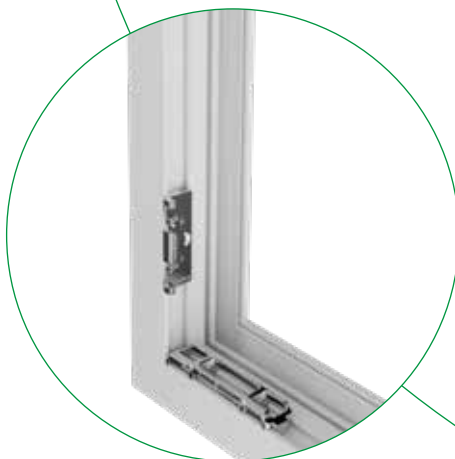
Corner drive



Window handle or cremone



Double lift-proof striker





Arm



Top hinge set



**Fastening
striker**



Bottom hinge set

FUTURA 130

Euro Groove

FUTURA 130 is a complete hardware system for Euro Groove tilt-and-turn windows with load capacities up to 140 kg.



Load capacity
140 kg



Adjustments

Bottom side = ± 1 mm
Bottom height = $+1.5/-0.5$ mm
Bottom compression = ± 0.3 mm
Top side = $+3.5/-1.5$ mm
Top compression = ± 1.5 mm



Installation

The window can be installed on site in just a few steps.



Opening

Max 180°



Corrosion resistance

Grade 4 according to standard EN 1670 (>240h salt spray).



Go to the **technical datasheet**

| Code | Description | Micro-ventilation | Range (mm) | Arm opening (mm) |
|-------|-----------------------------------|-------------------|----------------|------------------|
| 04711 | Futura 130 T/T hinges | - | - | - |
| 04202 | Futura Logica T/T T1 arm | No | L = 390 – 700 | 120 |
| 04203 | Futura Logica T/T T2 arm | No | L = 701 – 1800 | 175 |
| 04222 | Futura Logica T/T T2 arm (160 mm) | No | L = 701 – 1800 | 160 |
| 04284 | Futura micro T/T T1 arm | Yes | L = 410 – 700 | 120 |
| 04285 | Futura micro T/T T2 arm | Yes | L = 701 – 1800 | 175 |
| 04344 | Futura Logica micro T/T T1 arm | Yes | L = 410 – 700 | 120 |
| 04345 | Futura Logica micro T/T T2 arm | Yes | L = 701 – 1800 | 175 |
| 04353 | Futura T0 arm | No | L = 350 – 410 | 120 |
| 04728 | Futura 130 secondary sash adapter | | | |

Complete the window with all the hardware on pages 21–24

FUTURA R

R Groove

FUTURA R is a complete hardware system for R Groove tilt-and-turn windows with load capacities up to 110 kg.



Load capacity
110 kg



Adjustments
Bottom side = ± 1.2 mm
Bottom height = $+1.5/-0.5$ mm
Bottom compression = ± 0.3 mm
Top side = $+4/-2$ mm
Top compression = ± 1.5 mm



Installation
The installation of the door can take place on site in just a few steps.



Opening
Max 180°



Corrosion resistance
Grade 4 according to standard EN 1670 (>240h salt spray).



Go to the **technical datasheet**

| Code | Description | Micro-ventilation | Range (mm) |
|---------|---------------------|-------------------|----------------|
| 04721 | Futura R T/T hinges | - | - |
| 04380 | Futura R T/T T0 arm | No | L = 360 – 425 |
| 0422901 | Futura R T/T T1 arm | Yes | L = 425 – 580 |
| 0423001 | Futura R T/T T2 arm | Yes | L = 581 – 1700 |

Complete the window with all the hardware on pages 21–24

FUTURA 80 FLUSH

Euro Groove flush systems

FUTURA 80 Flush is a complete hardware system for Euro Groove tilt-and-turn windows with flush profiles.



Load capacity
80 kg



Adjustments
Bottom side = ± 1.5 mm
Bottom height = $+2.5/-1$ mm
Bottom compression = $+1.4/-0.6$ mm
Top side = $+3.5/-1.5$ mm
Top compression = ± 1.5 mm



Installation
The window can be installed on site in just a few steps.



Opening
Max 180°



Corrosion resistance
Grade 4 according to standard EN 1670 (>240h salt spray).



Go to the **technical datasheet**

| Code | Description | Micro-ventilation | Range (mm) | Arm opening (mm) |
|-------|--------------------------------|-------------------|----------------|------------------|
| 04718 | Futura 80 Flush T/T hinges | - | - | - |
| 04202 | Futura Logica T/T T1 arm | No | L = 390 – 700 | 120 |
| 04203 | Futura Logica T/T T2 arm | No | L = 701 – 1800 | 175 |
| 04284 | Futura micro T/T T1 arm | Yes | L = 390 – 700 | 120 |
| 04285 | Futura micro T/T T2 arm | Yes | L = 701 – 1800 | 175 |
| 04344 | Futura Logica micro T/T T1 arm | Yes | L = 390 – 700 | 120 |
| 04345 | Futura Logica micro T/T T2 arm | Yes | L = 701 – 1800 | 175 |

Complete the window with all the hardware on pages 21–24

FUTURA A & F

Euro Groove

FUTURA A & F is the only complete system on the market specifically for making arched and sloping aluminium tilt-and-turn windows.



Load capacity

75 kg (depending on the window geometry)



Adjustments

Bottom side = ± 1 mm
Bottom height = $+1.5/-0.5$ mm
Bottom compression = ± 0.3 mm
Top side = $+2/-0$ mm
Top compression = ± 1.8 mm



Installation

The installation of the door can take place on site in just a few steps.



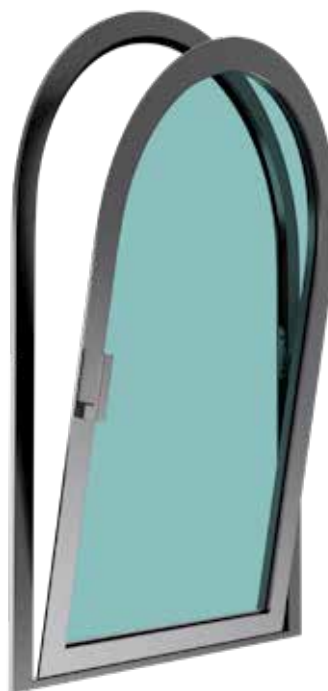
Opening

Max 180°



Corrosion resistance

Grade 4 according to standard EN 1670 (>240h salt spray).



Go to the **technical datasheet**

| Code | Description | Micro-ventilation | Range (mm) |
|--------|--------------------------------------------|-------------------|------------|
| 04671K | Futura Arch & Sloping T/T window mechanism | No | - |
| 04023K | Variable corner drive | - | - |
| 04301K | Additional arm | - | W > 1000 |

Complete the window with all the hardware on pages 21–24

TILT-AND-TURN ADDITIONAL HARDWARE

Fastening mechanisms

For use with C.H.I.C. or Futura hinges

| Code | Description | Mechanism | System |
|---------|-----------------------------------------|------------------------|-------------|
| 04371 | M 180 small backset fastening mechanism | Window handle / Supra7 | Euro Groove |
| 0470501 | M 180 fastening mechanism | Window handle / Supra7 | Euro Groove |
| 0470701 | Logica M 180 fastening mechanism | Window handle / Supra7 | Euro Groove |
| 04766N | M 180 fastening mechanism | Window handle / Supra7 | R Groove |
| 04704 | Fastening mechanism | Cremone | Euro Groove |
| 04767V | Fastening mechanism | Cremone | R Groove |
| 04706N | Logica fastening mechanism | Cremone | Euro Groove |
| 04768N | Logica fastening mechanism | Cremone | R Groove |

BALCONY DOOR

Giesse hinges such as **Futura** or **C.H.I.C.** concealed hinges can also be used on tilt-and-turn balcony doors, in combination with the appropriate one-way movement, lock (strength > 45 Nm) and double window handle.

This type of window can also be moved and closed from the outside.



| Code | Description | Notes | System |
|-------|-----------------------------|-------------------|-------------|
| 00945 | Mechanism | 32 mm backset | Euro Groove |
| 00946 | Lock | 32 mm backset | Euro Groove |
| 00947 | T/T mechanism with movement | Lock not included | Euro Groove |

Additional arms

For use with C.H.I.C. or Futura hinges

| Code | Description | Range (mm) | System |
|--------|--------------------------|----------------|-------------|
| 02030K | Friz stay limitation arm | see Giesse GTC | Euro Groove |
| 02034K | Friz stay limitation arm | see Giesse GTC | R Groove |
| 04301K | Additional arm | W > 1000 | Euro Groove |
| 04308K | Additional arm | W > 1000 | R Groove |

Additional fastening mechanisms

For use with C.H.I.C. or Futura hinges, except where otherwise specified in the description

| Code | Description | Range (mm) | System |
|--------|---------------------------------------------------------|----------------------|-------------|
| 04770K | Additional fastening mechanism | H > 1200 W > 1000 | Euro Groove |
| 04648K | Additional vert./horiz. fastening mechanism GS999 | H > 1200 W > 1000 | R Groove |
| 05287 | Additional arm fastening mechanism C.H.I.C. 130 ERRE | | R Groove |
| 04777K | Additional Logica fastening mechanism | H > 1200 W > 1000 | Euro Groove |
| 04357 | Additional arm fastening mechanism C.H.I.C. | | Euro Groove |

Corner drives

For use with C.H.I.C. or Futura hinges, except where otherwise specified in the description

| Code | Description | System |
|--------|--------------------------------------|-------------|
| 04019K | Futura corner drive for 15/20 groove | Euro Groove |
| 04023K | Futura A&F variable corner drive | Euro Groove |
| 04024K | Burglar-proof corner drive | Euro Groove |
| 04017K | Burglar-proof corner drive | R Groove |

Additional hardware

For use with C.H.I.C. or Futura hinges

| Code | Description | System |
|--------|-------------------|-------------|
| 04014K | T/T drive rod | Euro Groove |
| 04026K | T/T bolt tip | Euro Groove |
| 04311 | Sash opening lock | - |

SKG products

For use with C.H.I.C. or Futura hinges

| Code | Description | SKG** | SKG*** | Notes |
|---------|-------------------------------------|-------|--------|------------|
| 04007 | Tilt-and-Turn window kit | ✓ | ✓ | |
| 04000 | Burglar-proof fastening mechanism | ✓ | ✗ | |
| 04009 | Burglar-proof fastening mechanism | ✗ | ✓ | |
| 04107 | Incorrect movement safety device | ✗ | ✓ | |
| 04300 | Additional arm | ✓ | ✓ | L >1000 mm |
| 0119102 | Prima microvent key capture cremone | ✓ | ✓ | |
| 00960 | Kora microvent key capture cremone | ✓ | ✓ | |
| 0108501 | Asia microvent key capture cremone | ✓ | ✓ | |

Templates

| Code | Description | System |
|-------|-----------------------------|-------------|
| 03535 | C.H.I.C. template | Euro Groove |
| 05289 | C.H.I.C. 100 Flush template | Euro Groove |
| 03548 | C.H.I.C. 130 ERRE template | R Groove |
| 03520 | Futura template | Euro Groove |

TILT-AND-TURN MECHANISMS



| PRIMA | ASIA | KORA | ARIA |
|-----------------------------------------------------------------------------------------------------------------------------------------------------------------------------------------|--------------------------------------------------------------------------------------------------------------------------------------------------------------------------------------------------------------------|----------------------------------------------------------------------------------------------------------------------|--------------------------------|
| Supra7 - window handle without rosette | | | |
| 04155 standard 04397 double | 04153 standard 04395 double | 04154 standard 04396 double | 04156 standard 04398 double |
| Window Handles | | | |
| 02476 standard | 02415 standard | 00997 standard 00992 RH offset 00962 LH offset 030491 RH offset wide base 030492 LH offset wide base | × |
| Cremones | | | |
| 01159001 standard 01039 microvent 0119102 SKG microvent key capture 0114901 key capture 01192 Logica key capture 01194 Logica microvent key capture 01209 long handle | 01064 MP tilt-and-turn window 01083 tilt-and-turn window 01084 microvent 01086 key capture 01087 microvent key capture 0108501 SKG microvent key capture 01079 + 01111 away 01196 with MP key | 00959 microvent 00961 Logica key capture 00962 Logica microvent key capture 00960 SKG microvent key capture | × |



REGUITTI

Discover the collections of **Reguitti** and **Reguitti inox** tilt-and-turn window handles



Seals



Tilt--turn window

C.H.I.C.

FUTURA

Additional hardware

Seals

Q-LON polyurethane foam weatherseals

The exclusive Q-LON seal is made from a special polyurethane foam contained in a weather resistant polyethylene film.

- Excellent recovery after compression, even at low temperatures
- The lowest thermal conductivity on the market (0.04 W/m·K at 0 °C)
- Low compression force required
- The outer film is not altered by paints, detergents and colourants
- High resistance to weather and UV rays
- Exceptional sound insulation performance
- Wide range of colours
- Fire retardant version available



Full **technical datasheet**

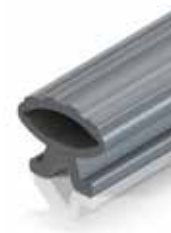
Extruded seals

Seals made in a range of extruded materials can be combined with foam seals.

- Very wide range of colours available
- Three different densities and materials for optimal performance
- Configurable geometries from the simplest to the most specific shapes



Full **technical datasheet**





Schlegel

High performance sealing solutions



GIESSE

Innovative engineered hardware



REGUITTI

Italian design handles



DATEC

Timeless exclusive handles



 **TYMAN**
International

GIESSE S.p.A. Via Tubertini 1, 40054 Budrio (BO), Italy
Tel: +39 051 8850000 | email: info.it@tyman.com



U1116001
06/2024