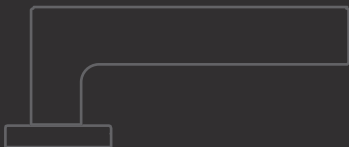


TOP SELECTION



**JATEC**  
TYMANgroup



*Das 1890 gegründete Unternehmen JADO hat sich von der Herstellung von Beschlägen für Lederkoffer bis 1975 zu einem reinen Hersteller von Fenster- und Türgriffen entwickelt. Im Jahr 2016 änderte die Marke ihren Namen in JATEC, wobei sie ihren Ruf als Hersteller hochwertiger Luxusgriffe für Innenräume beibehielt. Im Jahr 2020 führte Jatec mit der Linie JTC by Jatec ein neues Konzept von Luxus ein.*

Created in 1890, JADO has evolved from producing fittings for leather cases to exclusively focusing on windows and doors handles by 1975. In 2016 the brand changed its name into JATEC while still maintaining its reputation as the highest quality manufacturer in the market of luxury handles for interior design. In 2020 Jatec introduces a new concept of luxury with the JTC by Jatec line.

**JATEC**





# INDEX

## JATEC



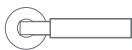
### BAUHAUS ECKIG

J04MRJ30 p.8



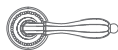
### BAUHAUS ECKIG

J04MRJ04 p.8



### BAUHAUS RUND

J04MRJ01 p.9



### BELLE EPOQUE

J12MRJ13 p.9



### BELVEDERE

J16MPJ16  
p.10



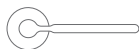
### ESCALIER

J03MRJ03 p.10



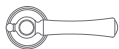
### ID-9 ECKIG

J37MRJ37 p.11



### ID-9 RUND

J37MRJ01 p.11



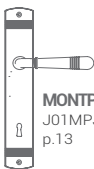
### LIGHTHOUSE

J36MRJ36 p.12



### METROPOL

J35MPJ35  
p.12



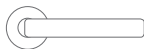
### MONTPARNASSE

J01MPJ01  
p.13



### PURE ECKIG

J26MRJ30 p.14



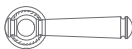
### PURE RUND

J26MRJ01 p.14



### SANSSOUCI

J18MRJ18 p.15



### SANSSOUCI PORZELLAN

J18MRJ18 p.15



952 GF 914  
p.16



973 GF 914  
p.16



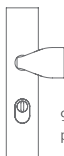
982 GF 922  
p.17



955 GF 420  
p.18



976 GF 373  
p.18



976 GF 374  
p.19



993 GF 922  
p.19



952 GF 914  
p.20



973 GF 373  
p.20



351 GF 421  
p.21



361 GF 420  
p.21



371 GF 373  
p.22



951 GF 913  
p.22



354 AC 421  
p.23



370 AC 374  
p.23



950 AC 420  
p.24



CDJ50

p.24



CDJQ5

p.25



**BAUHAUS**  
J04HSQ13  
p.26



**PURE**  
J26HS313  
p.26



**SANSSOUICI**  
J18HS313  
p.27



**CLAUDIA**  
101MRD17 p.30



**ESSENCE ECKIG**  
260MRQD7 p.30



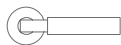
**ESSENCE RUND**  
260MRD17 p.31



**GINEVRA**  
040MRD17 p.31



**HARMONIE ECKIG**  
004MRQD7 p.32



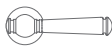
**HARMONIE RUND**  
004MRD17 p.32



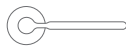
**IXIA ECKIG**  
J40MRQD7 p.33



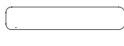
**IXIA RUND**  
J40MRD17 p.33



**KLASS**  
180MRD17 p.34



**LINEAR**  
002MRD17 p.34



**ONE**  
10NMRD1N p.35



**Q-ARTE**  
124MRQD7 p.35



**SANDRA**  
168MRD17 p.36



**SPRING RUND**  
141MRD17 p.36



**BERNINI**  
307HS313  
p.37



**Q-ARTE**  
124HSQ13  
p.37



**SPRING ECKIG**  
141HSQ13  
p.38



**SPRING RUND**  
141HS313  
p.38



**AMBIENTE PLUS**  
R51SR p.39



**AMBITION PLUS**  
R41SR p.39

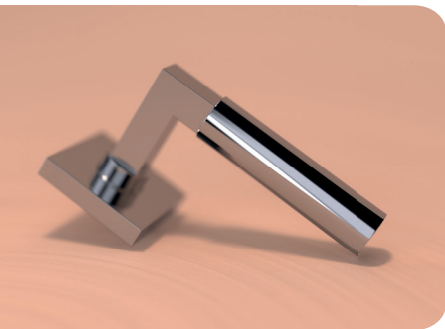


DATEC

# Bauhaus Eckig JO4

BRASS  
MESSING

JO4MRJ30



05



18



46



5S



K1



# Bauhaus Eckig JO4

BRASS  
MESSING

JO4MRJO4

MIT SCHRAUBENKÖPF



05



46



5S



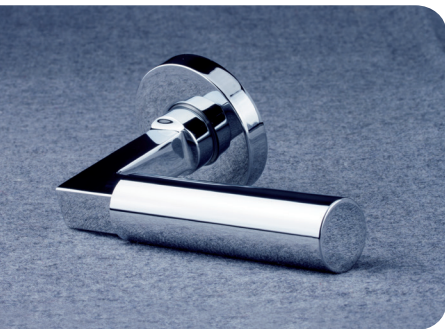
K1



# Bauhaus Rund J04

BRASS  
MESSING

J04MRJ01



05



18



46



5S



K1



# Belle Epoque J12

BRASS  
MESSING

J12MRJ13



05



46



8B



# Belvedere J16

J16MPJ16

BRASS  
MESSING



46



# Escalier J03

J03MRJ03

BRASS  
MESSING



31



46



8B



98





# Id-9 Eckig J37

J37MRJ37

BRASS  
MESSING



05



18



5S



# Id-9 Rund J37

J37MRJ01

BRASS  
MESSING



05



18



5S



# Lighthouse J36

J36MRJ36

BRASS  
MESSING



05



46



8B



98



# Metropol Holz J35

J35MPJ35

BRASS  
MESSING



6P



L6



# Montparnasse J01

BRASS  
MESSING

J01MPJ01



05



46



98



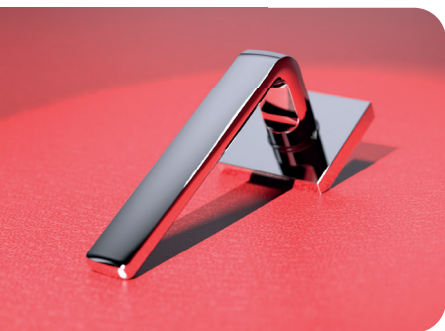
5S



# Pure Eckig J26

BRASS  
MESSING

J26MRJ30



05



18



5S



# Pure Rund J26

J26MRJ01

BRASS  
MESSING



18



31



Z8



# Sanssouci J18

J18MRJ18

BRASS  
MESSING



05



46



K1



# Sanssouci Porzellan J18

BRASS  
MESSING

J18MRJ18



52



53



61



P4



56



P6



# 952 GF 917

STAINLESS STEEL  
EDELSTAHL



50



5S



# 973 GF 914

STAINLESS STEEL  
EDELSTAHL



50



5S



# 982 GF 922

STAINLESS STEEL  
EDELSTAHL



50



5S



# 955 GF 420

STAINLESS STEEL  
EDELSTAHL



46



5S



# 976 GF 373

STAINLESS STEEL  
EDELSTAHL



05



5S





# 976 GF 374

STAINLESS STEEL  
EDELSTAHL



05



5S



# 993 GF 922

STAINLESS STEEL  
EDELSTAHL



5S



# 952 GF 914

STAINLESS STEEL  
EDELSTAHL



5S



# 973 GF 373

STAINLESS STEEL  
EDELSTAHL



5S



# 351 GF 421

STAINLESS STEEL  
EDELSTAHL



05



46



98



# 361 GF 420

STAINLESS STEEL  
EDELSTAHL



05



18



46



# 371 GF 373

STAINLESS STEEL  
EDELSTAHL



05



18



# 951 GF 913

STAINLESS STEEL  
EDELSTAHL



05



18



# 354 GF 421

STAINLESS STEEL  
EDELSTAHL



05



1M



46



98



# 370 AC 374

STAINLESS STEEL  
EDELSTAHL



05



98



# 950 AC 420

STAINLESS STEEL  
EDELSTAHL



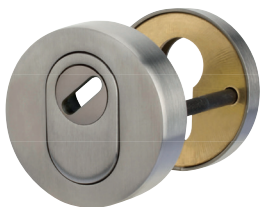
Z8



18



# CD J50



18



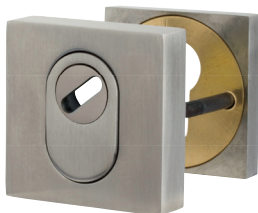
46



5S



# CD JQ5



18



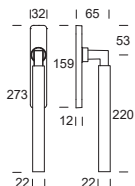
5S



# Bauhaus JO4

J04HSQ13

BRASS  
MESSING



05



18



46



98



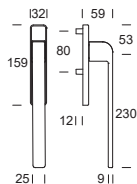
K1



# Pure J26

J26HSQ13

BRASS  
MESSING



05

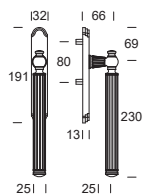




# Sanssouci J18

BRASS  
MESSING

J18HS313



05



46





**r**UTC

# Claudia 101

101MRD17

BRASS  
MESSING



05



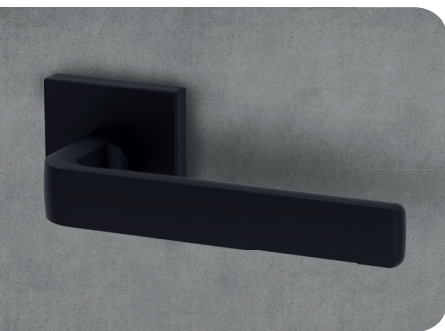
46



# Essence Eckig 260

260MRQD7

BRASS  
MESSING



18



31



# Essence Rund 260

BRASS  
MESSING

260MRD17



18



31



# Ginevra 040

BRASS  
MESSING

040MRD17



1M



47



BQ



# Harmonie Eckig 004

BRASS  
MESSING

004MRQD7



05



18



# Harmonie Rund 004

BRASS  
MESSING

004MRD17



05

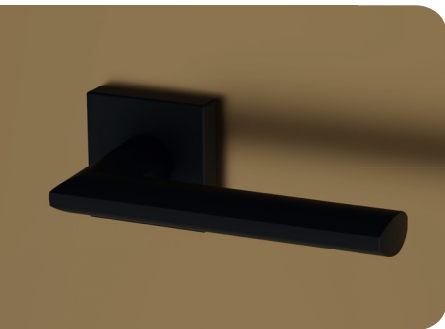


18



# Ixia Eckig J40

J40MRQD7



TEKNOMETAL



18



# Ixia Rund J40

J40MRD17



TEKNOMETAL



18



# Klass 180

180MRD17

BRASS  
MESSING



05



18



1M



# Linear 002

002MRD17

TEKNOMETAL



18

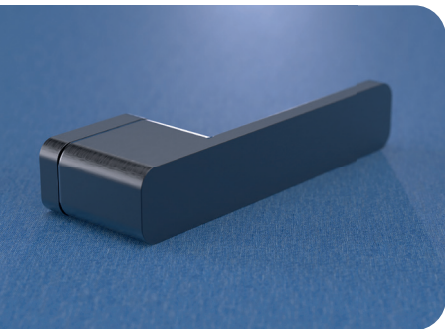




# One 10N

10NMRD1N

ALUMINIUM



NO



NR



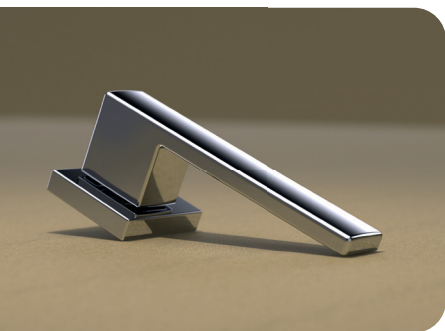
NW



# Q-Arte 124

124MRQD7

BRASS  
MESSING



05



18



31



# Sandra 168

168MRD17

BRASS  
MESSING



61



P4



P6



P7



# Spring Rund 141

141MRD17

TEKNOMETAL



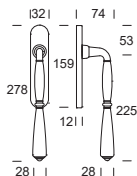
18



# Bernini 307

307HS313

BRASS  
MESSING



1M



47



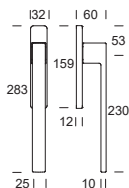
BQ



# Q-Arte 124

124HSQ13

BRASS  
MESSING



05



18



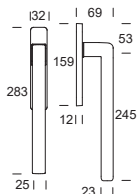
31



# Spring Eckig 141

BRASS  
MESSING

141HSQ13



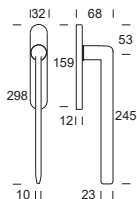
18



# Spring Rund 141

BRASS  
MESSING

141HS313



18



# Ambiente Plus



R51SR



R52SR



R53SR



R54SR



R51IN



5S



# Ambition Plus



R41SR



R42SR



R43SR



R44SR



R41IN



5S







DISCOVER OUR  
CATALOGUE



PDF



WEB SITE

[www.jatechandles.com](http://www.jatechandles.com)



UVCSPVUTS1JA24XXX