

# TECHPLUS

HIGH PERFORMANCE LINE





## CERTIFICAZIONI / CERTIFICATIONS

**CERTIFICATION - EN 1906-4**  
*Mechanical resistance 200.000 cycles*

**CERTIFICATION - EN 1670**  
*Corrosion resistance - grade 5*

**CERTIFICATION - EN 2409**  
*Resistance and adhesion of paints to surfaces - grade 0*

**CERTIFICATION - EN 13126-3**  
*Mechanical resistance - 10.000 cycles*

**Luce 730**



**Lea 731**



**Lisa 732**



**Jo 733**



# TECHPLUS

Gamma completa di maniglie per porte e finestre adatta a tutte le soluzioni hardware: **porte d'ingresso, porte interne, porte a profilo, finestre a battente, alzanti scorrevoli.**

*Full range of door and window handles suitable for all hardware solutions: **entrance doors, interior doors, profile doors, casement window, lift and slide systems.***

SUITABLE FOR / ADATTO PER  
Alluminium | Wood | PVC | Steel



**Alluminio riciclato** come materiale di base per offrire un prodotto realizzato con materiali sostenibili.



**Recycled aluminium** as the base material to offer a product made from sustainable materials.

Ampiezza e profondità della gamma.  
Alta affidabilità del prodotto e alto livello tecnico.

*Width and depth of range.  
High product reliability and technical level.*



**MECHANISM / MECCANISMO**  
**EASY CLICK system**

Sistema rapido brevettato EASY CLICK system per porte che non richiede attrezzi o viti

*Fast-assembly patented EASY CLICK system for doors that does not require tools or screws*



**MECHANISM / MECCANISMO**  
**EASY SPINDLE system**

Sistema di fissaggio rapido EASY SPINDLE system nelle maniglie per finestre

*Fast-assembly window handle system EASY SPINDLE system for tilt and turn hardware*

**FINITURE**  
**FINISHES**

KL

With the RAL 9016

KG

Silver F1

KI

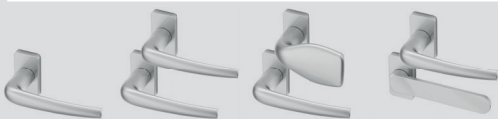
Inox F9

NR

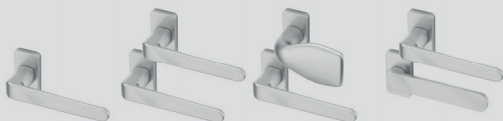
Black RAL 9005

Per finiture disponibili vedi listino / For available finishes see price list

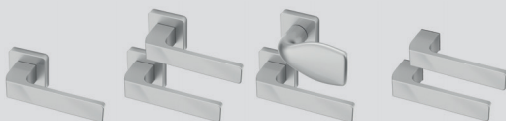
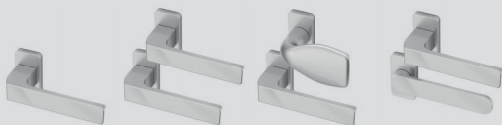
**Luce  
730**



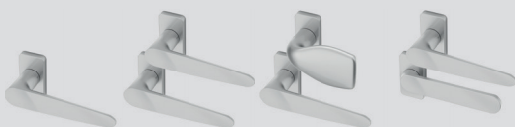
**Lea  
731**

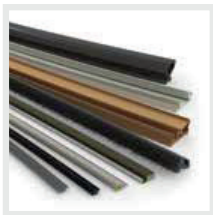


**Lisa**  
**732**



**Jo**  
**733**





# Schlegel

High performance sealing solutions



# GIESSE

Innovative engineered hardware



# REGUITTI

Italian design handles



# JATEC

Timeless exclusive handles

 **TYMAN**  
International

GIESSE S.p.A. Via Tubertini 1, 40054 Budrio (BO), Italia  
Tel: +39 051 8850000 | email: info.it@tyman.com

UVDPLVUTP3TPXXXXX  
M.DEP.TECH.07-2023

